



深圳圣斯尔电子技术有限公司
SHENZHEN SENSOR ELECTRONIC TECHNOLOGY CO.,LTD.

开口式交流电流互感器

CE-IJCT-24-F

输出 Output: 66.6mA, 75 mA, 5A

孔径 Aperture: $\Phi 20.5\text{mm}$

精度 Accuracy: 1-2%

技术参数

工作温度 Operating temperature:

-40~+80℃

储藏温度 Storage Temperature:

-45~+80℃

输入电流 Primary Current (Amp.) 50/60Hz:

150A~300A

精度等级 Accuracy @ $R_L \leq 10\Omega$:

Class 1-2%

匝比 Turns ratio:

1:30, 1:40, 1:50, 1:60, 1:2000; 1:3000; optional

绝缘耐压 Dielectric Withstanding Voltage (Hi-pot):

4.0KV/1mA/1min

绝缘电阻 Insulation Resistance:

DC500V/100M Ω min

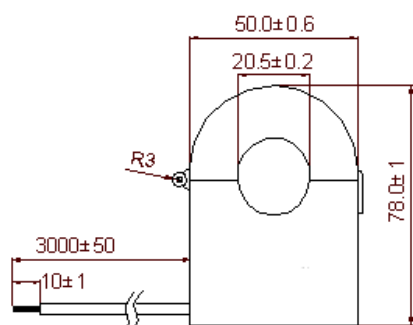
开口最小角度 Opening Angle:

180 degree

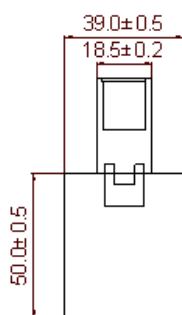
重量 Approx. Weight

260g

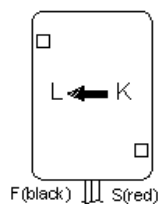
外型尺寸



Front view



Right view



Bottom view



测试电路

